

MS. STEF'S WEEKLY NEWSLETTER

February 3-7

Week At A Glance:

MATH: Number recognition (1-20) & Shapes Review

PHONICS: Phonics: K, U & G

WEEKLY TOPICS: Body Parts & Introduction to Family

SONGS: K Song, U Song & G Song
Jack Hartman & Jolly Phonics Songs

Reminders & Dates:

**Monday, February 10 -
Makha Bucha Day - NO
SCHOOL**

Vocabulary

-Head
-Arms
-Legs
-Family
-Mom/Dad/Brother/Sister/Grandma/
Grandpa



February^{3rd-7th}

Important Dates

Monday, February 10th
Makha Bucha Day - no school

Friday, February 21st
Superheros and villains dress
up!

Specials this Week

Monday - Chinese; Thai
Tuesday - Chinese; Music
Wednesday - Chinese; P.E.
Thursday - Chinese; Thai
Friday - Chinese; P.E.



Week at a Glance

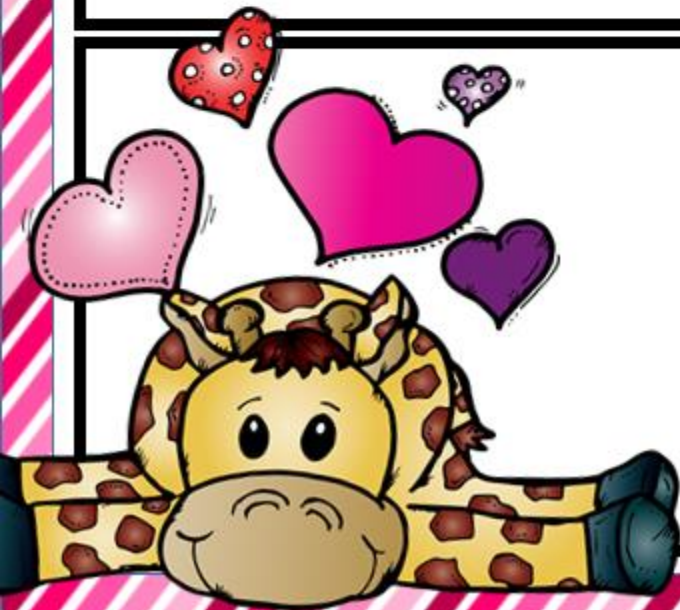
Morning circle -
Greeting, days of the
week, months, and
weather

Math - Counting 0-
20, recognizing 0-11,
and shapes

English - Phonics,
alphabet time, and
common
words/phrases

Character
Development -
Manners, cooperation,
and kindness

Health - how to cough
without spreading
germs and how to
prevent injuries



Ms. Allie's Weekly Word



February 3 - 7, 2020

Week at a Glance

Reading – George Washington Visits

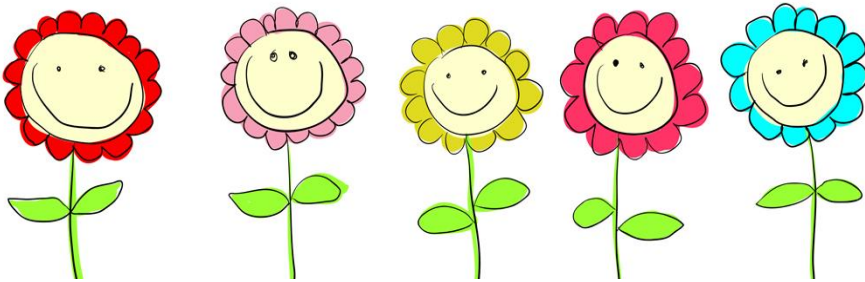
Math – Review Comparing and Repeated Reasoning

Writing – Th cluster words

Science – Review Plants and Animals Unit

Health – Respect

Social Studies – How Do We Learn About Our Country?



Dates to Remember

Monday 2/10

Makha Bucha Day

No School

Specials next week

Monday – Art and Computer

Tuesday – PE and Thai

Wednesday – STEM, Music, and Thai

Thursday – PE and Thai

Friday – Art





February

class newsletter



Health- Tobacco
And Alcohol Harm

Social Studies-

How Travel has
Changed

Phonics- Words

Beginning in F

High Frequency

Words, Verbs with

Added -s

**Ms Dani's
Weekly
Word
Feb 3-7**



Dates To Know!

**1/10- Makha
Bucha Day!
(No School)**

**1/14- Valentines
Day!**

**1/ 21-Superhero
and Villain Day!**

