

# February

## Important Dates

Monday, February 10<sup>th</sup>  
Makha Bucha Day - no school

Friday, February 14<sup>th</sup>  
Valentine's Day

Friday, February 21<sup>st</sup>  
Superheros and Villians dress up!



## Specials This Week

Monday - Chinese; P.E.

Tuesday - Chinese; Thai

Wednesday - Chinese; P.E.

Thursday - Chinese; Thai

Friday - Chinese; Music

## Week at a Glance

Number/Shape/  
Color

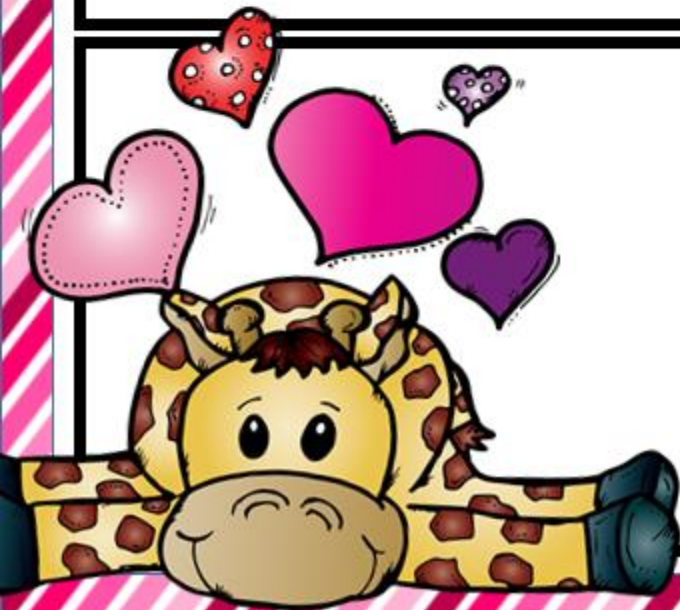
10

Rectangle  
Purple

English - Phonics  
letter Dd, parts of  
the body, and  
transportation.

Arts and Crafts -  
Horses

Character  
Development -  
Manners matter,  
"please and thank  
you," are very  
important words.  
Using kind words,  
"I'm sorry."



# Miss Sharyn's Weekly Newsletter



February 3 - 7, 2020

## Week at a Glance

**Morning Circle** – learn new songs

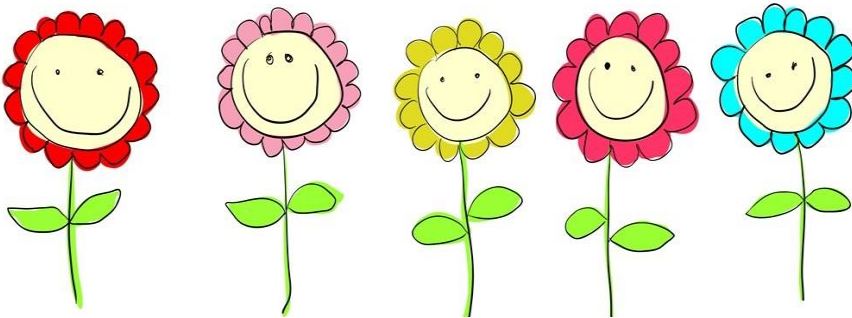
**Letter** - h

**Number** – revise numbers 1 – 7

**Shape:** triangle

**Language practice** – weather: today is sunny/rainy/hot/cold/windy.

**Arts and Crafts** – make 'clouds'.



## Things to Remember

Monday 10th February:  
Makha Bucha Day  
(no school.)

Please remember to  
bring 2 small cartons of  
milk for your child each  
day.

## Specials Next Week

Monday – Music; Chinese

Tuesday – P.E; Chinese

Wednesday – Thai; Chinese

Thursday – P.E; Chinese

Friday – Thai; Chinese.

